

# CUBESCAN™

## BioCon-900 Rolling Cart

- Antitheft lock system
- Prevent device damage
- Great durability and mobility
- Additional holder for easy of use



# BioCon-900

Display	TFT-LCD 2.4 inch	Power	Rechargeable Li-ion battery Nominal Voltage: 3.6 V Nominal Capacity: 5200mAh Charging Time: less than 6 hours Charged by the Docking station Discharging: approximately 1500Scans**
Range	0-999ml Accuracy: ±15%, ±15ml(0-999ml)*	External Interface	IrDA(Infrared Data Association)
Scan Time	Approximately 2 seconds	Patient ID Input	1D/2D Barcode Scan or Image Capture
Ultrasound Probe	Dual frequency(2MHz, 3.4MHz) B-mode scan image Scan angle: 120° Penetration depth (Normal patient) : 23cm (Children) : 8cm	User Interface	Icons and 5 buttons

\*According to the scanning instruction and scanning on a Mcube Technology Tissue-Equivalent Bladder Phantom.  
\*\*For a new battery module fully charged, Tested on Mcube Technology's test conditions.



Serving The HealthCare Industry

Australia:

- ☎ 1800 67 5432
- ☎ 1800 67 5433
- ✉ sales@ecomед.com.au
- 🌐 www.ecomed.com.au

New Zealand:

- ☎ 0800 300 421
- ☎ 0800 300 422
- ✉ sales@ecomед.co.nz
- 🌐 www.ecomed.co.nz

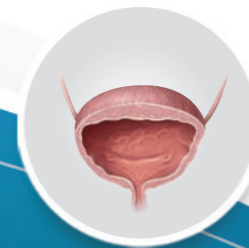
# CUBESCAN™

## BioCon-900

Bladder Volume Measurement System

More Functional

More Accessible



Man, Machine & Medicine  
**Mcube Technology Co., Ltd.**  
Since 1999

## ● Cordless Probe with Versatile Docking Station

CUBEScan™ BioCon-900 is a hand-held, non-invasive ultrasound device that measures bladder volume **quickly and easily**. A built-in printer in the docking station enables immediate on-site printing.



## ● Industry Leading Bladder Scanner Technology



### 1. Wireless Charger System

CUBEScan™ BioCon-900 offers cordless charging from its docking station.



### 2. Wireless Data Transmission

Saved Data will be transferred to the docking station by IrDA(Infrared Data Association) system and then to your computer by USB cable.



### 3. Barcode Reader and Image Capture

Barcode reader or Image Capture is available for patient identification after scanning. [\*Barcode reader is an optional item.]

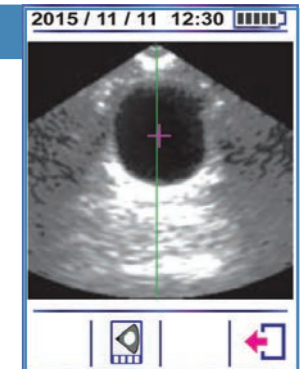


### 4. ACT (Auto-Construction Technology)

By using 3D volume estimation modeling, bladder volume is accurately calculated in case of off-center scans.

## ● Pre-scan

Providing a live ultrasound image before scanning enables the user to easily locate the bladder for quicker, more accurate readings.



## ● Bladder Point Mark

Display a conspicuous bladder point mark for real-time tracing of bladder position during Pre-scan.

## ● Self Diagnosis

CUBEScan™ BioCon-900 has a Self Diagnosis function which enables ordinary check of the probe quickly. (Phantom or Calkit calibration is also available.)

## ● Scan Depth

BioCon-900 has a deeper scan depth of 230mm which enables to use on higher BMI patients.

## ● Scan Time

BioCon-900 is able to measure bladder volume in only 2 seconds.

## ● Child Mode

Users can measure even a small amount of volume for children more accurately in child mode.

## ● Extended Use

CUBEScan™ BioCon-900 is able to perform approximately 1500 scans when fully charged. Scan results can be printed out through the built-in printer and easily transferred to PC for EMR compatibility.

